

THE MADISON BUILDING

ANNAPOLIS TOWNE CENTRE AREA



2200 Somerville Road
Annapolis, MD 21401

FOR SALE / LEASE
PRIME OFFICE SPACE
IN ANNAPOLIS, MD.

410.269.8400

For Sale / Lease

This three story, all brick building in the center of the new Annapolis Towne Center features renovated lobby, freshly paved parking and exterior improvements in the heart of Parole.

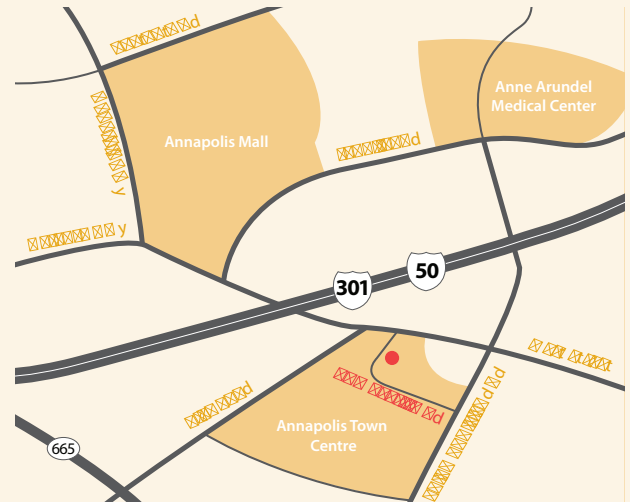
Property Specifics and Highlights

Welcome to The Madison Building at 2200 Somerville Road at the new Annapolis Towne Center, and the areas most talked mixed use development. Here you will find excellent access to shops, restaurants, parking and public

meeting space to support your business.

Property is adjacent to Annapolis Towne Center

- Building size 12,000 square feet
- Views of West Street and the New Annapolis Parole Center
- All brick building
- Renovated lobby
- High speed Internet available
- Tenant improvement allowance
- Only minutes to Annapolis Mall, Anne Arundel Medical Center, Maryland State House, Naval Academy and courthouse.
- Immediate access to Route 50



Directions: Take US-50 toward Annapolis to Exit 23 toward MD 178 Parole. Proceed to light and turn left onto West Street/Route 450 East. Turn at your first right onto Summerville Road at the Exxon gas station. 2200 Summerville is the first building on your left.



2200

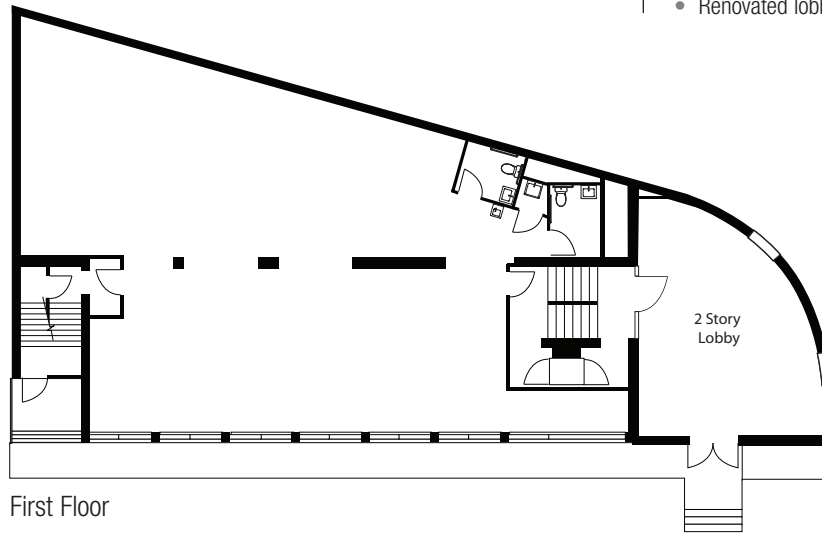
Lease one of the most conveniently located buildings in Annapolis. Just off US Route 50 and West Street.

Call Maisel Real Estate for more information - 410.269.8400

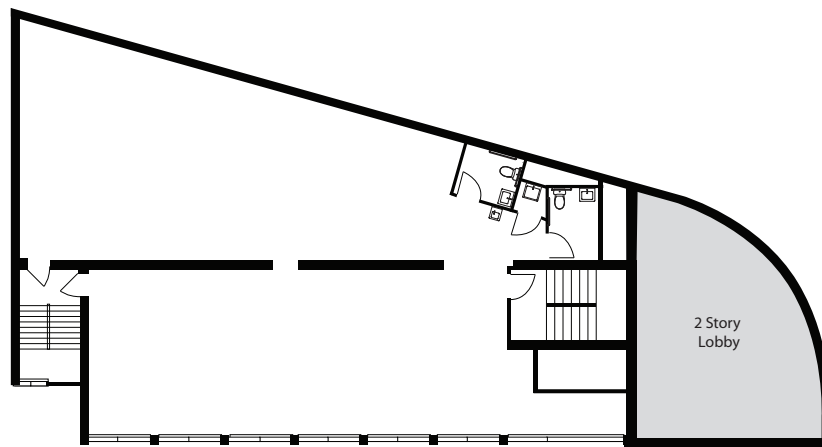
THE MADISON BUILDING

2200 SOMERVILLE ROAD, ANNAPOLIS, MD

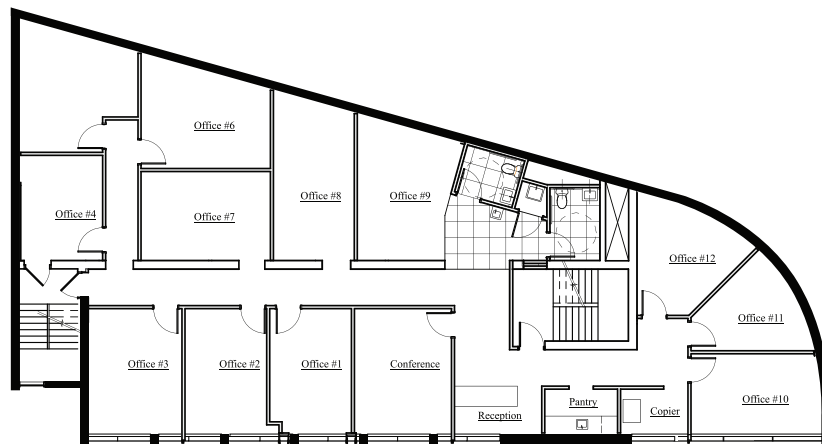
- Building size 12,000 square feet
- Views of West Street and the New Annapolis Parole Center
- All brick building
- Renovated lobby



First Floor



Second Floor



Third Floor (with sample plan)